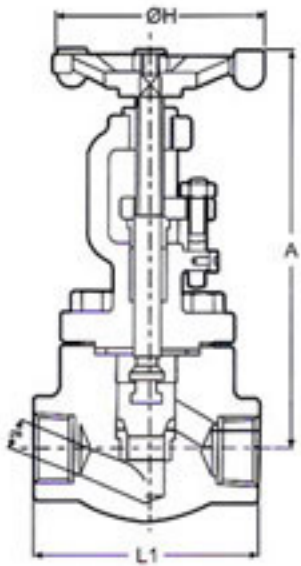
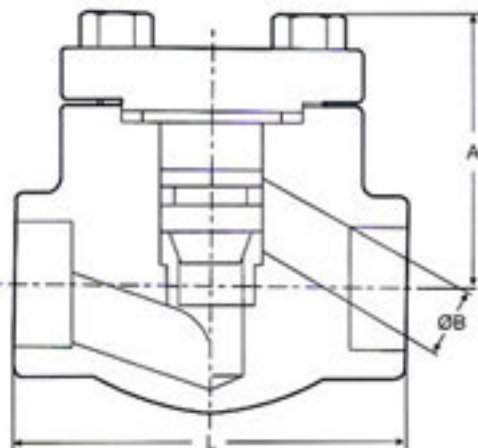


**GATE VALVE**



**GLOBE VALVE**



**LIFT CHECK VALVE**

## MATERIALS OF CONSTRUCTION

DESCRIPTION	CARBON STEEL VALVES	STAINLESS STEEL VALVES
BODY	ASTMA105 *	ASTMA182 Gr. F 304/ F 316 **
SEAT RING	A276 TP 410 / A217 Gr. CA15	INTEGRAL/ A 276 TP 304/ 316
PLUG/ DISC/ WEDGE	A 276 TP 410/ A 217 Gr. CA15	A 276 TP 304/ 316
STEM	A 276 TP 410	A 276 TP 304/ 316
GASKET	SW SS + GRAPHITE	SW SS + GRAPHITE
BONNET/ COVER	A 105*	A 182 Gr. F 304/ F316
JOINT BOLTS	A 193 Gr. B7	A 193 Gr. B7
GLAND PACKING	GRAPHITE RINGS #	GRAPHITE RINGS #
GLAND BUSH	A 276 TP 410 #	A 276 TP 304/ 316 #
GLAND FLANGE	A 105 #	A 105 #
EYE BOLTS & NUTS	A 307 Gr. B / A 563 Gr. A #	A 307 Gr. B/ A 563 Gr. A #
YOKE SLEEVE/ BUSH	A 439 Gr. D2 #	A 439 Gr. D2 #
HAND WHEEL	MALLEABLE IRON #	MALLEABLE IRON #

\* Valves also manufactured in F5, F11, F22 & LF2.  
# Applicable only for GTV & GBV.

\*\* Valves also manufactured in F304L & F316L.

## TOLERANCES : -

a) Face to Face : +/- 1.6mm

b) SW End: + 0.25 / - 0.0

## FACE TO FACE / END-TO-END DIMENSIONS

(Class 800, 1500 & 2500)

CLASS 800	Reduced Bore		Gate Valve		Standard Bore		Gate Valve		
	NPS in	1/2"	3/4"	1"	1 1/2"	2"	1/2"	3/4"	1"
L	84	90	105	127	140	90	105	127	140
A	155	160	180	235	245	160	180	235	245
ØH	85	85	90	150	150	85	90	150	150
ØB	9	12	18	30	36	12	18	23	36

CLASS 1500	Standard Bore		Gate Valve	
	NPS in	1/2"	3/4"	1"
L	90	105	127	140
A	160	180	235	245
ØH	85	90	150	150
ØB	11.5	15	19.5	32

CLASS 2500	Standard Bore		Gate Valve	
	NPS in	1/2"	3/4"	1"
L	105	127	140	
A	180	235	245	
ØH	90	150	150	
ØB	9.5	12.7	15.9	

CLASS 800	Reduced Bore		Globe Valve		Standard Bore		Globe Valve		
	NPS in	1/2"	3/4"	1"	1 1/2"	2"	1/2"	3/4"	1"
L	84	90	105	127	140	90	105	127	140
A	165	165	185	260	280	165	185	260	280
ØH	85	85	90	150	150	85	90	150	150
ØB	9	12	17.5	29.5	29.5 *	12	17.5	22.5	29.5 *

CLASS 1500	Standard Bore		Globe Valve	
	NPS in	1/2"	3/4"	1"
L	90	105	127	140
A	165	185	260	280
ØH	85	90	150	150
ØB	11	14.5	19	29.5

CLASS 2500	Standard Bore		Globe Valve	
	NPS in	1/2"	3/4"	1"
L	105	127	140	
A	185	260	280	
ØH	90	150	150	
ØB	11	14.5	19	

CLASS 800	Reduced Bore		Check Valve		Standard Bore		Check Valve		
	NPS in	1/2"	3/4"	1"	1 1/2"	2"	1/2"	3/4"	1"
L	84	90	105	127	140	90	105	127	140
A	58	72	79	110	125	72	79	110	125
ØB	9	12	17.5	29.5	29.5 *	12	17.5	22.5	29.5 *

CLASS 1500	Standard Bore		Check Valve	
	NPS in	1/2"	3/4"	1"
L	90	105	127	140
A	72	79	110	125
ØB	11	14.5	19	29.5

CLASS 2500	Standard Bore		Check Valve	
	NPS in	1/2"	3/4"	1"
L	105	127	140	
A	79	110	125	
ØB	11	14.5	19	

\* For Reduced Bore Globe Valve and Lift Check valve and Full Bore Globe and Lift Check valve, the bore dimension shall be 29.5mm only for sizes 1 1/2" & above.