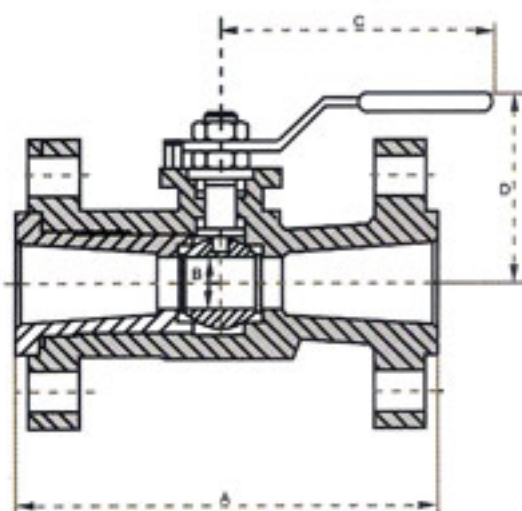




# DIMENSIONS - FLOATING BALL VALVE

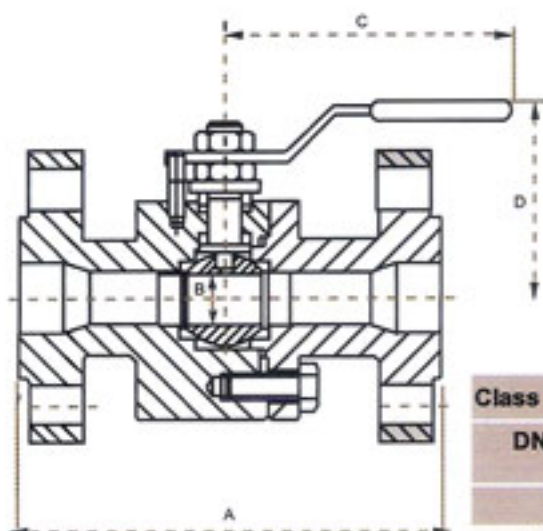
BALL VALVE



### Class 150 Lbs

DN (in)	A	Bø	C	D	Kg	Torque (Nm)
	RF					
0.50	108	13	150	80	3	7
0.75	117	16	160	84	4	8
1.00	127	20	160	87	6	18
1.50	165	32	190	102	12	51
2.00	178	39	190	102	15	67
3.00	203	64	500	156	22	93
4.00	228,5	80	500	168	46	150
6.00	393,5	100	390	191	110	380
8.00	457	152	650	256	175	800

All dimensions are in millimetres



### Class 150 Lbs

DN (in)	A			Bø	C	D	Kg	Torque (Nm)
	RF	BW	RTJ					
0.5	108	139,5		14	145	82	3	7
0.75 x 0.50	117	152,5		14	145	82	3,5	7
0.75	117	152,5		20	170	87	4	8
1.00 x 0.75	127	165		20	170	87	5	8
1.00	127	165		25	170	92	6	18
1.25 x 1.00	139,5	178		25	170	92	8	18
1.25	139,5	178		32	270	105	10	35
1.50 x 1.25	165	190,5		32	270	105	11	35
1.50	165	190,5		38	270	108	12	51
2.00 x 1.50	178	216		38	270	108	13	51
2.00	178	216		50	270	119	15	67
2.50 x 2.00	190,5	241		50	270	119	17	67
2.50	190,5	241		65	380	150	19	78
3.00 x 2.00	203	282,5		65	270	119	20	67
3.00	203	282,5		76	380	163	22	93
4.0 x 3.00	228,5	305		76	380	163	42	93
4.00	228,5	305		102	470	187	46	150
6.00 x 4.00	393,5	457		102	470	187	80	150
6.00 <sup>(1)</sup>	393,5	457		150	700	210	110	550
8.00 x 6.00 <sup>(1)</sup>	457	520,5		150	700	210	120	550
8.00 <sup>(2)</sup>	457	520,5		200	700	280	175	1250

All dimensions are in millimetres

Ensuring your control on the flow...

