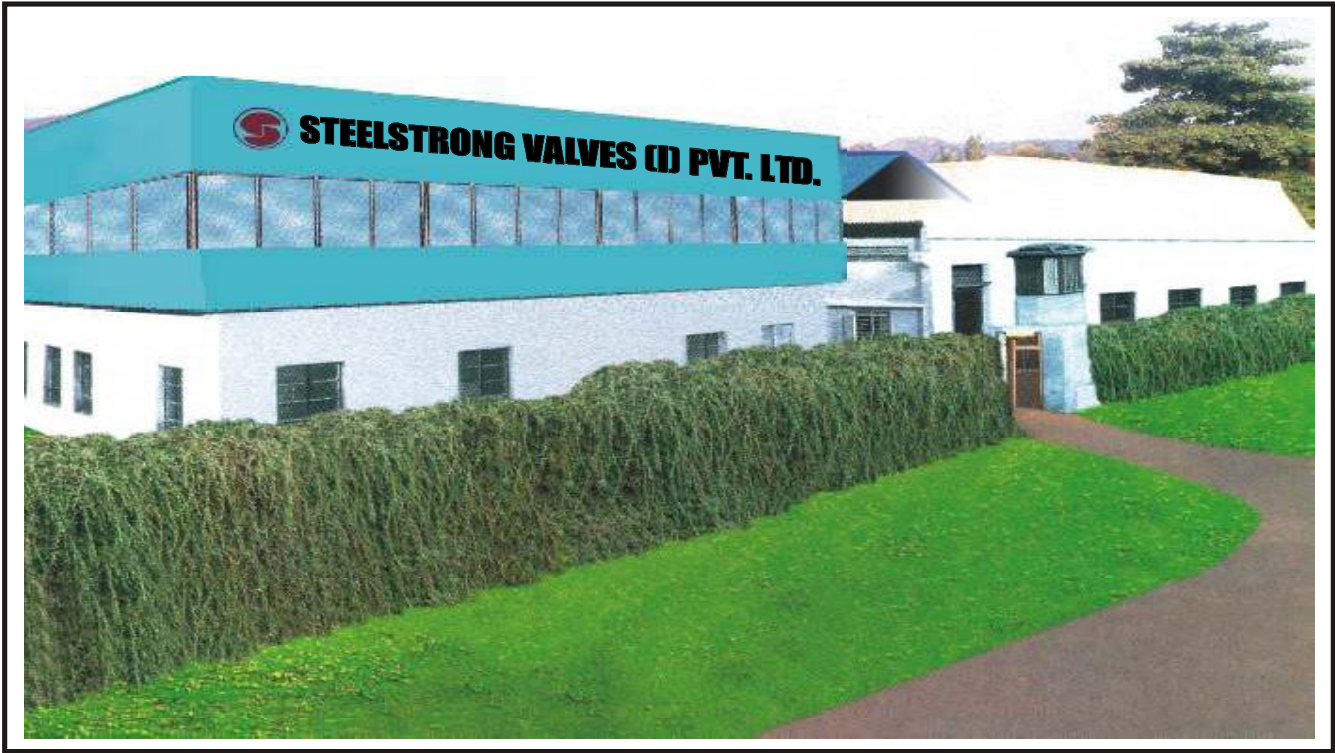




ALWAYS STRONG IN VALVE WORLD



STEELSTRONG



Head Office & Plant I



Plant II



STEELSTRONG is synonymous with the industrial valve industry for over two decades. We have three strategically located manufacturing plants in Maharashtra and Gujarat to cater to the growing demands of this industry.

As market leaders in industrial valves, we ensure and set trends for quality in the Indian sub-continent. In fact we are the first company to achieve Dual registration from API for ISO 9001 and API-6D Monogram Facilities. Today we have acquired four API licenses to manufacture valves and oil field equipments.

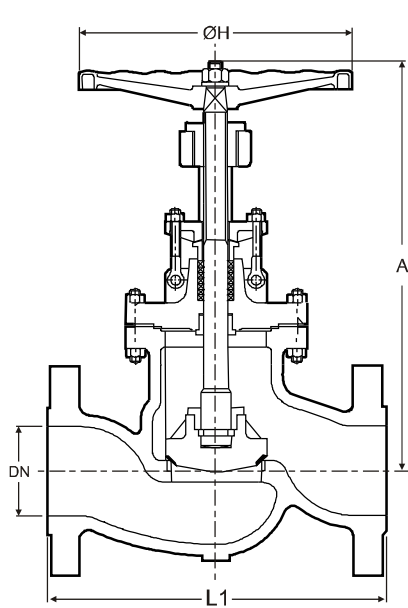
Our products are widely used and endorsed by the Oil and Gas industry, Power, Fertilizer, Petrochemical and Process industry in India and Overseas.

Our commitment to quality assures a growing customer base and our after sales support speaks volumes of our dedication towards you.

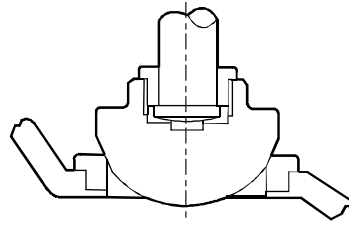
Yes, we continue to aim to be the best valve manufacturers of international standards.

RAMESH SHETTY

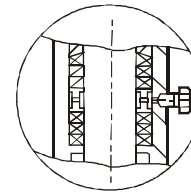
Chairman & Managing Director



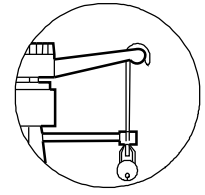
Class 150/ 300/ 600/ 900/ 1500/ 2500



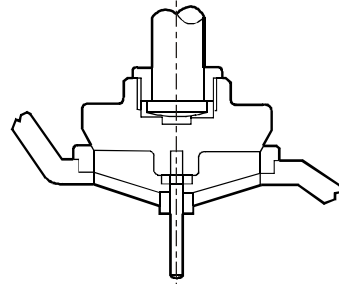
Parabolic Plug



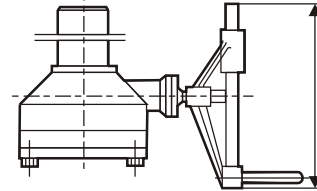
Vacuum Seal Arrangement



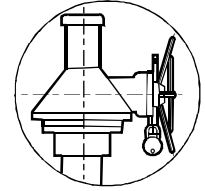
Locking Arrangement



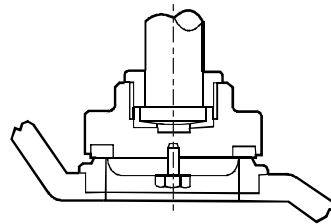
**Guided Plug
Sizes >6"**



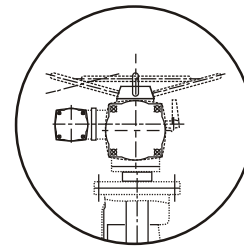
Gear Box



Locking Arrangement



Soft Seated Plug



Electrical Actuator



Butt-weld end



RTJ

MATERIALS OF CONSTRUCTION

DESCRIPTION	WCB	LCB	CF8M	WC6 / WC9 / C5
BODY (1)	ASTM A 216 Gr. WCB	ASTM A 352 Gr. LCB	ASTM A 351 Gr. CF8M	ASTM A Gr. WC6 / WC9 / C5
SEAT RING (2, 3)	WCB + 13% Cr. STEEL/ A 217 Gr. CA 15	A 351 Gr. CF8	A 351 Gr. CF8M / INTEGRAL	A 217 Gr. CA 15
PLUG (2, 3)	WCB + 13% Cr. STEEL/ A 217 Gr. CA 15 / AISI 410	LCB A 351 Gr. CF8	A 276 TP 316 / A 351 Gr. CF8M	A 217 Gr. CA 15 / AISI 410
STEM (2)	A 276 TP 410	A 276 TP 304	A 276 TP 316	A 276 TP 410
GASKET (2)	SW SS + CAF/ GRAPHITE	SW SS + GRAPHITE	SW SS + GRAPHITE	SW SS + GRAPHITE
BONNET (1)	A 216 Gr. WCB	A 352 Gr. LCB	A 351 Gr. CF8M	A 216 Gr. WC6 / WC9 / C5
JOINT STUDS & NUTS	A 193 Gr. B7 & A 194 Gr. 2H	A 320 Gr. L7 & A 194 Gr. 4 / 7	A 193 Gr. B7 & A 194 Gr. 2H	A 193 Gr. B16 & A 194 Gr. 4 / 7
BONNET BUSH (2)	A 276 TP 410	A 276 TP 304	A 276 TP 316/ CF8M	A 276 TP 410
GLAND PACKING	GRAPHITE RINGS	GRAPHITE RINGS	GRAPHITE RINGS	GRAPHITE RINGS
GLAND BUSH (2)	A 276 TP 410	A 276 TP 304	A 276 TP 316	A 276 TP 410
GLAND FLANGE	A 105	A 182 F304/A 105	A 182 F316	A 182 F5
CROSS BOLTS & NUTS	A 307 Gr. B & A 563 Gr. A	A 307 Gr. B & A 563 Gr. A	A 307 Gr. B & A 563 Gr. A	A 307 Gr. B & A 563 Gr. A
EYE BOLTS & NUTS	A 307 Gr. B & A 563 Gr. A	A 307 Gr. B & A 563 Gr. A	A 307 Gr. B & A 563 Gr. A	A 307 Gr. B & A 563 Gr. A
YOKE BUSH	A 439 Gr. D2	A 439 Gr. D2	A 439 Gr. D2	A 439 Gr. D2
HAND WHEEL	MALLEABLE IRON/ DUCTILE IRON	MALLEABLE IRON/ DUCTILE IRON	MALLEABLE IRON/ DUCTILE IRON	MALLEABLE IRON/ DUCTILE IRON

Also Available

- (1) Casting in **WCC, LCC, CF8, CF3, CF8C, CN7M, C12, DUPLEX SS, HASTALLOY, MONEL**, also provided against requirement.
- (2) With different combination for WCB valves.
- (3) Special features like Stelling.



DESIGN FEATURES :

- Design Standard as per BS 1873 / B 16.34
- ISO 15761(1/2" to 1 1/2" Flanged End)
- Flange details as per ASME B 16.5.
- Butt weld ends dimension as per ASME B 16.25.
- Face to face dimension as per ASME B 16.10 / BS 2080.
- Testing Standard as per BSEN 12266
- Threaded seat ring provided up to 6".
- Seal welded seat rings provided for valves 8" & above.
- Parabolic plug, regulating plug, skirted plug & guided plug design.
- Rising stem & rising hand wheel construction.
- Non-rising hand wheel construction against request.
- Tongue & groove for spiral wound gasket design for 300#, 600#, 900#, 1500#, 2500# Gate Valves, against request
- Extended stem can be provided on request.

SPECIAL FEATURES :

- With Gear operation If the applied force exceeds 350 N
- With Limit Switch arrangements for Open and Close position
- With Electrical / pneumatic actuators
- With Lantern ring arrangement for Vacuum services.
- With Stellite
- With IBR Certification
- With NACE MR 0175/ MR-105
- With Position indicators.
- Locking arrangement

TOLERANCES :-

- A) Face to Face : +/- 2.0mm upto NPS 10" and smaller,
+/- 3mm for NPS 12 & larger

FACE TO FACE / END-TO-END DIMENSIONS FOR GLOBE VALVES

(Class 150, 300, 600, 900,1500 & 2500)

CLASS	NPS in	1/2" *	3/4" *	1" *	1 1/2" *	2"	2 1/2"	3"	4"	5"	6"	8"	10"	12"	14"	16"	
		DN mm															
CLASS 150	L1 (RF)	108	117.5	127	165.1	203	216	241	292	356	406	495	622	699	787	914	
	L2 (BWE)	-	-	-	-	203	216	241	292	356	406	495	622	699	787	914	
	L3 (RTJ)	-	-	-	-	216	229	254	305	368	419	508	635	711	800	927	
	ΦH	86	86	86	152	200	250	250	300	350	350	400	500	500	560	650	
	A	184	185	236	282	338	373	396	476	497	524	588	738	862	950	994	
	WT. IN KG.	F/E	4.5	5.5	7.5	17	21	28	35	58	82	100	160	253	398	550	724
		E	-	-	-	-	17	20	27	47	71	86	138	219	362	491	650
	CLASS 300	L1 (RF)	152.4	177.8	203.2	229	267	292	318	356	-	445	559	622	711	838	864
		L2 (BWE)	-	-	-	-	267	292	318	356	-	445	559	622	711	838	864
		L3 (RTJ)	-	-	-	-	283	308	333	371	-	460	575	638	727	854	879
ΦH		90	95	95	152	200	250	250	350	-	500	560	600	650	610	610	
A		184	186	237	282	353.5	388.5	420.5	495.5	-	674.5	911.5	949	1032	1130	1310	
WT. IN KG.		F/E	7	8	12	19	25	38	49	76	-	168	282	385	724	1125	1650
		E	-	-	-	-	19	29	38	58	-	137	237	319	632	975	1450
CLASS 600		L1 (RF)	165.1	190.5	215.9	241.3	292	330	356	432	-	559	660	787	838	889	991
		L2 (BWE)	-	-	-	-	292	330	356	432	-	559	660	787	838	889	991
		L3 (RTJ)	-	-	-	-	295	333	359	435	-	562	663	790	841	292	994
	ΦH	90	95	95	152	250	250	350	450	-	560	600	700	610	610	762	
	A	184	185	236	283	396.5	446	495.5	599	-	791	1014	1180	1397	1450	1610	
	WT. IN KG.	F/E	9.5	10.5	16.5	21	36	50	78	120	-	284	543	700	900	1620	2160
		E	-	-	-	-	29	40	64	91	-	227	460	562	739	1330	1760
	CLASS 900	L1 (RF)	216	229	254	305	368	419	381	457	-	610	737	838	965	1029	-
		L2 (BWE)	216	229	254	305	368	419	381	457	-	610	737	838	965	1029	-
		L3 (RTJ)	-	-	-	-	371	422	384	460	-	613	740	841	968	1038	-
ΦH		110	-	-	-	350	350	450	500	-	610	610	610	610	760	-	
A		260	-	-	-	590	660	699	781	-	1400	1500	1600	1705	2210	-	
WT. IN KG.		F/E	11	-	-	-	110	155	190	280	-	630	1350	2050	2650	3650	-
		E	-	-	-	-	80	120	155	230	-	540	1200	1870	2400	3350	-
CLASS 1500		L1 (RF)	216	229	254	305	368	419	470	546	-	705	832	991	1130	1257	-
		L2 (BWE)	216	229	254	305	368	419	470	546	-	705	832	991	1130	1257	-
		L3 (RTJ)	-	-	-	-	371	422	473	549	-	711	841	1000	1146	1276	-
	ΦH	110	130	130	250	350	350	500	560	-	610	610	760	760	760	-	
	A	260	300	300	390	590	660	850	920	-	1700	1960	2310	2670	3200	-	
	WT. IN KG.	F/E	11	16	19.5	34	110	155	230	400	-	910	2100	3200	4400	5400	-
		E	-	-	-	-	80	120	185	330	-	790	1900	2800	3800	4700	-
	CLASS 2500	L1 (RF)	264	273	308	384	451	508	578	673	-	914	1022	1270	1422	-	-
		L2 (BWE)	264	273	308	384	451	508	578	673	-	914	1022	1270	1422	-	-
		L3 (RTJ)	-	-	-	-	387	454	514	584	683	-	927	1038	1292	1445	-
ΦH		130	130	250	300	400	500	560	610	-	610	610	760	760	-	-	
A		332	332	370	435	720	800	885	1260	-	1905	2465	2800	3505	-	-	
WT. IN KG.		F/E	19	21	40	62	190	300	350	840	-	2300	4800	6800	8500	-	-
		E	-	-	-	-	160	240	280	690	-	2000	4400	6000	7500	-	-

* - Supplied only with Flanged end connections.
Sizes not covered in above standards are as per manufacturer standard.



GATE VALVE



GATE VALVE



HIGH PRESSURE MOTORISED VALVE



'Y' TYPE STRAINER



SWING CHECK VALVE



FS GATE VALVE



GLOBE VALVE



**FORGED STEEL
GLOBE VALVE**



**FORGED STEEL
LIFT CHECK VALVE**

Head Office & Plant I
STEELSTRONG VALVES (I) PVT. LTD.

Plot No.R-241, TTC Industrial Area,
M.I.D.C., Rabale,
Navi Mumbai 400 701.
Phones: (91-22) 27695536 / 27690074
Fax: (91-22) 27695537
Email: steelstrongvalve@mtnl.net.in
adminsteelstrong@steelstrong.com
website: www.steelstrong.com

Plant II

Plot No. B/176, 186, 187,
Ajanta Industrial Estate,
Village: Vasna Iyava,
Taluka: Sanand
Ahmedabad - 382 170
Gujarat.
Phone: 02717-619100 / 619109 / 619115
Email: sanandworks@steelstrong.com

