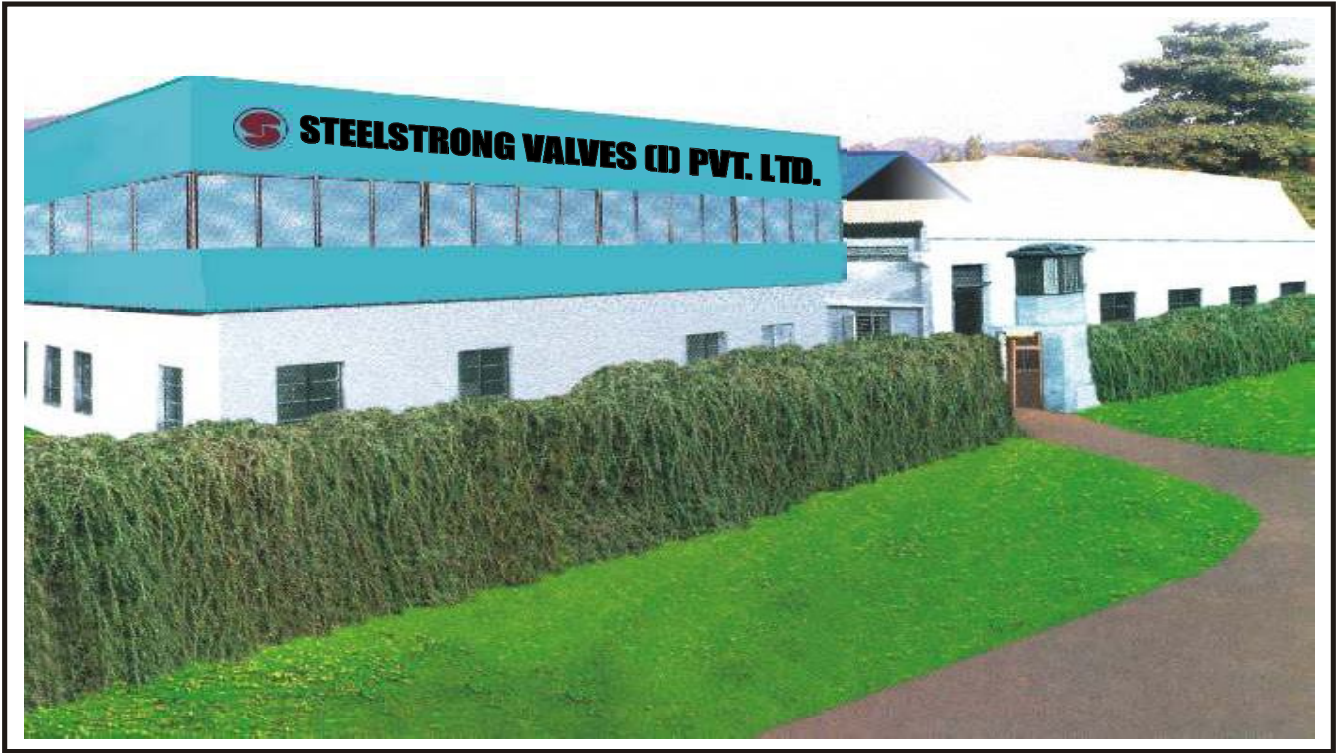




ALWAYS STRONG IN VALVE WORLD



**STEELSTRONG**



**Head Office & Plant I**



**Plant II**



**STEELSTRONG** is synonymous with the industrial valve industry for over two decades. We have three strategically located manufacturing plants in Maharashtra and Gujarat to cater to the growing demands of this industry.

As market leaders in industrial valves, we ensure and set trends for quality in the Indian sub-continent. In fact we are the first company to achieve Dual registration from API for ISO 9001 and API-6D Monogram Facilities. Today we have acquired four API licenses to manufacture valves and oil field equipments.

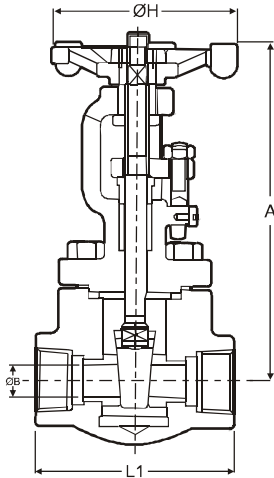
Our products are widely used and endorsed by the Oil and Gas industry, Power, Fertilizer, Petrochemical and Process industry in India and Overseas.

Our commitment to quality assures a growing customer base and our after sales support speaks volumes of our dedication towards you.

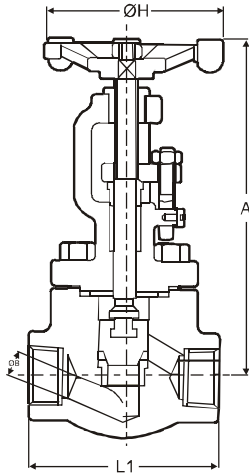
Yes, we continue to aim to be the best valve manufacturers of international standards.

**RAMESH SHETTY**

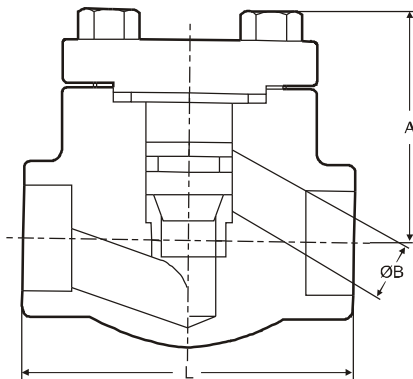
*Chairman & Managing Director*



**GATE VALVE**



**GLOBE VALVE**



**LIFT CHECK VALVE**

## MATERIALS OF CONSTRUCTION

| DESCRIPTION       | CARBON STEEL VALVES          | STAINLESS STEEL VALVES        |
|-------------------|------------------------------|-------------------------------|
| BODY              | ASTM A105 *                  | ASTM A182 Gr. F 304/ F 316 ** |
| SEAT RING         | A276 TP 410 / A217 Gr. CA15  | A 276 TP 304/ 316             |
| PLUG/ DISC/ WEDGE | A 276 TP 410/ A 217 Gr. CA15 | A 276 TP 304/ 316             |
| STEM              | A 276 TP 410                 | A 276 TP 304/ 316             |
| GASKET            | SW SS + GRAPHITE             | SW SS + GRAPHITE              |
| BONNET/ COVER     | A 105*                       | A 182 Gr. F 304/ F316         |
| JOINT BOLTS       | A 193 Gr. B7                 | A 193 Gr. B7                  |
| GLAND PACKING     | GRAPHITE RINGS #             | GRAPHITE RINGS #              |
| GLAND BUSH        | A 276 TP 410 #               | A 276 TP 304/ 316 #           |
| GLAND FLANGE      | A 105 #                      | A 105 #                       |
| EYE BOLTS & NUTS  | A 307 Gr. B / A 563 Gr. A #  | A 307 Gr. B/ A 563 Gr. A #    |
| YOKE SLEEVE/ BUSH | A 439 Gr. D2 #               | A 439 Gr. D2 #                |
| HAND WHEEL        | MALLEABLE IRON #             | MALLEABLE IRON #              |

\* Valves also manufactured in F5, F11, F22 & LF2.

\*\* Valves also manufactured in F304L & F316L.

# Applicable only for GTV & GBV.

## TOLERANCES :-

a) Face to Face : +/- 1.6mm

b) SW End: + 0.25 / - 0.0

## FACE TO FACE / END-TO-END DIMENSIONS

(Class 800, 1500 & 2500)

| CLASS 800 | Reduced Bore |      |      |     | Gate Valve |     | Standard Bore |      |     |        |
|-----------|--------------|------|------|-----|------------|-----|---------------|------|-----|--------|
|           | NPS in       | 1/2" | 3/4" | 1"  | 1 1/2"     | 2"  | 1/2"          | 3/4" | 1"  | 1 1/2" |
| L         | 84           | 90   | 105  | 127 | 140        | 90  | 105           | 127  | 140 |        |
| A         | 155          | 160  | 180  | 235 | 245        | 160 | 180           | 235  | 245 |        |
| ΦH        | 85           | 85   | 90   | 150 | 150        | 85  | 90            | 150  | 150 |        |
| ΦB        | 9            | 12   | 18   | 30  | 36         | 12  | 18            | 23   | 36  |        |

| CLASS 1500 | Standard Bore |      |      |     | Gate Valve |  |
|------------|---------------|------|------|-----|------------|--|
|            | NPS in        | 1/2" | 3/4" | 1"  | 1 1/2"     |  |
| L          | 90            | 105  | 127  | 140 |            |  |
| A          | 160           | 180  | 235  | 245 |            |  |
| ΦH         | 85            | 90   | 150  | 150 |            |  |
| ΦB         | 11.5          | 15   | 19.5 | 32  |            |  |

| CLASS 2500 | Standard Bore |      |      | Gate Valve |  |
|------------|---------------|------|------|------------|--|
|            | NPS in        | 1/2" | 3/4" | 1"         |  |
| L          | 105           | 127  | 140  |            |  |
| A          | 180           | 235  | 245  |            |  |
| ΦH         | 90            | 150  | 150  |            |  |
| ΦB         | 9.5           | 12.7 | 15.9 |            |  |

| CLASS 800 | Reduced Bore |      |      |      | Globe Valve |     | Standard Bore |      |        |        |
|-----------|--------------|------|------|------|-------------|-----|---------------|------|--------|--------|
|           | NPS in       | 1/2" | 3/4" | 1"   | 1 1/2"      | 2"  | 1/2"          | 3/4" | 1"     | 1 1/2" |
| L         | 84           | 90   | 105  | 127  | 140         | 90  | 105           | 127  | 140    |        |
| A         | 165          | 165  | 185  | 260  | 280         | 165 | 185           | 260  | 280    |        |
| ΦH        | 85           | 85   | 90   | 150  | 150         | 85  | 90            | 150  | 150    |        |
| ΦB        | 9            | 12   | 17.5 | 29.5 | 29.5 *      | 12  | 17.5          | 22.5 | 29.5 * |        |

| CLASS 1500 | Standard Bore |      |      |      | Globe Valve |  |
|------------|---------------|------|------|------|-------------|--|
|            | NPS in        | 1/2" | 3/4" | 1"   | 1 1/2"      |  |
| L          | 90            | 105  | 127  | 140  |             |  |
| A          | 165           | 185  | 260  | 280  |             |  |
| ΦH         | 85            | 90   | 150  | 150  |             |  |
| ΦB         | 11            | 14.5 | 19   | 29.5 |             |  |

| CLASS 2500 | Standard Bore |      |      | Globe Valve |  |
|------------|---------------|------|------|-------------|--|
|            | NPS in        | 1/2" | 3/4" | 1"          |  |
| L          | 105           | 127  | 140  |             |  |
| A          | 185           | 260  | 280  |             |  |
| ΦH         | 90            | 150  | 150  |             |  |
| ΦB         | 11            | 14.5 | 19   |             |  |

| CLASS 800 | Reduced Bore |      |      |      | Check Valve |    | Standard Bore |      |        |        |
|-----------|--------------|------|------|------|-------------|----|---------------|------|--------|--------|
|           | NPS in       | 1/2" | 3/4" | 1"   | 1 1/2"      | 2" | 1/2"          | 3/4" | 1"     | 1 1/2" |
| L         | 84           | 90   | 105  | 127  | 140         | 90 | 105           | 127  | 140    |        |
| A         | 58           | 72   | 79   | 110  | 125         | 72 | 79            | 110  | 125    |        |
| ΦB        | 9            | 12   | 17.5 | 29.5 | 29.5 *      | 12 | 17.5          | 22.5 | 29.5 * |        |

| CLASS 1500 | Standard Bore |      |      |      | Check Valve |  |
|------------|---------------|------|------|------|-------------|--|
|            | NPS in        | 1/2" | 3/4" | 1"   | 1 1/2"      |  |
| L          | 90            | 105  | 127  | 140  |             |  |
| A          | 72            | 79   | 110  | 125  |             |  |
| ΦB         | 11            | 14.5 | 19   | 29.5 |             |  |

| CLASS 2500 | Standard Bore |      |      | Check Valve |  |
|------------|---------------|------|------|-------------|--|
|            | NPS in        | 1/2" | 3/4" | 1"          |  |
| L          | 105           | 127  | 140  |             |  |
| A          | 79            | 110  | 125  |             |  |
| ΦB         | 11            | 14.5 | 19   |             |  |

\* For Reduced Bore Globe Valve and Lift Check valve and Full Bore Globe and Lift Check valve, the bore dimension shall be 29.5mm only for sizes 1 1/2" & above.



**GATE VALVE**



**GATE VALVE**



**HIGH PRESSURE MOTORISED VALVE**



**'Y' TYPE STRAINER**



**SWING CHECK VALVE**



**FS GATE VALVE**



**GLOBE VALVE**



**FORGED STEEL  
GLOBE VALVE**



**FORGED STEEL  
LIFT CHECK VALVE**

**Head Office & Plant I**  
**STEELSTRONG VALVES (I) PVT. LTD.**

Plot No.R-241, TTC Industrial Area,  
M.I.D.C., Rabale,  
Navi Mumbai 400 701.  
Phones: (91-22) 27695536 / 27690074  
Fax: (91-22) 27695537  
Email: steelstrongvalve@mtnl.net.in  
adminsteelstrong@steelstrong.com  
website: www.steelstrong.com

**Plant II**

Plot No. B/176, 186, 187,  
Ajanta Industrial Estate,  
Village: Vasna Iyava,  
Taluka: Sanand  
Ahmedabad - 382 170  
Gujarat.  
Phone: 02717-619100 / 619109 / 619115  
Email: sanandworks@steelstrong.com

