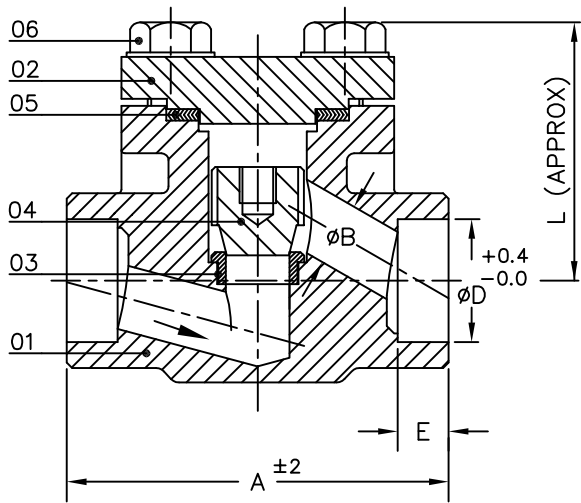


Customer: M/s.  
 PROJECT: M/s.  
 P.O.No.: \_\_\_\_\_ Date: \_\_\_\_\_  
 W.O.No.: \_\_\_\_\_ Date: \_\_\_\_\_



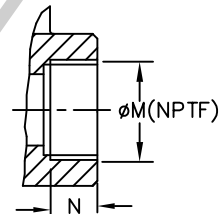
# FORGED STEEL 800# LIFT CHECK VALVES

DWG.NO.: - SDLCV800										REV.: -00	
PART NO.	PART NAME	MATERIAL								QTY	
01	BODY	A105	F304	F304L	F316	F316L	F5/F11	F22	LF2	1	
02	COVER	A105	F304	F304L	F316	F316L	F5/F11	F22	LF2	1	
03	SEAT RING	SS410	SS304	SS304L	SS316	SS316L	SS410	SS410	SS304	1	
04	PLUG	SS410	SS304	SS304L	SS316	SS316L	SS410	SS410	SS304	1	
05	GASKET	SPIRAL WOUND SS304 + GRAFOIL		SPIRAL WOUND + GRAFOIL		SS316	SPIRAL WOUND SS304 + GRAFOIL		SP.W SS304+ GRAFOIL	1	
06	BODY BOLT	ASTM A 193 Gr. B7							B16	L7	4



### DESIGN FEATURES

- FACE TO FACE AS PER MANUFACTURER'S STD.
- SOCKET WELD END AS PER ASME B 16.11.
- CLASS 3000 (2009)
- SCREWED NPT END AS PER ASME B 1.20.1
- UNSPECIFIED MATERIAL CONFIRM AS PER API602/ISO15761/MANUFACTURER



SCREWED END

DESIGN STD. API602(2005)/  
ISO15761(2002)

CLASS	800						
SIZE / NB	3/8"10	1/2"15	3/4"20	1"25	1 1/4"32	1 1/2"40	2"50
A	84	84	90	105	127	127	142
B(min.)	6	9	12	17	23	28	29.5
D	17.6	21.8	27.2	33.9	42.5	48.7	61.2
E(min.)	9.5	9.5	12.5	12.5	12.5	12.5	16
L	56	56	67	70	100	100	108
M	3/8"	1/2"	3/4"	1"	1 1/4"	1 1/2"	2"
N	13.6	13.6	13.9	17.3	18	18.4	19.2
WT.IN KG(APPROX)	0.75	0.75	0.9	1	3	3	6
QTY Nos.	-	-	-	-	-	-	-

SPECIAL TRIM REQUIREMENTS	YES	NO
03 SEAT RING	STELLITED	
03&04 SEAT RING & PLUG	STELLITED	

MATERIAL GRADE	A105	F11	F22	F5	F304	F316	F316L	SS.410	SS.304	SS.316	SS.316L	LF2	L7
ASTM NO	A105	A182	A182	A182	A182	A182	A182	A276	A276	A276	A276	A350	A320

TEST STD.: API598/BSEN 12266-1

TEST PRESSURE		PSIG	Kg/cm <sup>2</sup>
HYDROSTATIC	SHELL	3000	211
	SEAT	2200	155

**STEEL STRONG** - APPROVED BY , ISO 9001-2008, (C) & MARKING

API 6D-0315

ALL DIMENSIONS ARE IN MM UNLESS SPECIFIED

REV. 00  
 Nos. 01/07/2011  
 Date.

APPROVED BY C. S. Dec  
 FOR APPROVAL

CHECKED BY Pankaj  
 FOR REFERENCE

PREPARED BY Pankaj  
 FOR REFERENCE